

225kW Diesel Driven 400 Hz Ground Power Unit



AWAC/J-Star



Model 300T400-E3

ITW MILITARY GSE:

ITW Military GSE is the industry leader in product design and innovation. The best combination of experience, new technology and customer input has resulted in a product line you can trust for your aircraft's needs.

APPLICATION:

- Used on E3 (AWACS), E4, E6, E8 (JStars), EC18 (ARIA) and other high power demand aircraft.
- Four separately controlled outputs provide ease of use on aircraft with multiple receptacles.
- USAF stock number NSN 6115-01-371-8271.
- Available in trailer and skid/truck mounted configurations.

PERFORMANCE FEATURES:

Proven design:

- Computer controlled turbocharged diesel engine with outstanding transient performance.
- Fully qualified and approved by USAF. Tested to MIL-STD-810 environmental conditions.
- Operable with JP4, Jet A, JP5, JP8 as well as diesel fuel.
- Field proven reliability, with MTBF well over 3,000 hours.
- Solid state voltage regulator provides steady state and transient performance exceeding MIL-STD-704.
- Technical manual including operation, maintenance and illustrated parts breakdown in accordance with MIL-M-38797/MIL-M-38807.
- Self-contained air start system. Starting system includes engine glow plugs for ease of start at low ambient temperatures. Operating temperatures from -50° F to +140° F.
- Fault monitoring diagnostic circuitry.
- Capable of continuous operation without shutdown by utilizing internal fuel pump to draw from external source and automatic engine lubricant top off system.

Durable:

- Designed to endure the rigors of the flight line environment
- Easy access to all components for maintenance

Model	Output Power	Output Voltage	Length	Width	Height	Weight
300T400-E3	225 kW, 282 kVA	115/200 VAC, 400 Hz	137" (348 cm)	73" (185.42 cm)	86" (218.44 cm)	8,000 lbs (3,628.8 kg)



300T400-E3 225kW Diesel Driven 400 Hz Ground Power Unit Specifications

ENGINE

- Detroit Diesel 6V92T DDEC electronic fuel injection.
- Compressed air start with self contained storage tank.
- Computer readout of all engine functions with separate data reader.
- Automatic warning/shutdown for: High temperature, Low oil pressure, and Overspeed
- Easy access to: Dry type air cleaner, fuel filters, lube oil filters, muffler, radiator with blower type fan, sealed/ maintenance-free control battery with charging alternator.
- Controls and Instruments: Fuel level, water temperature and oil pressure gauges, run time meter, battery voltmeter, engine control switch, panel light switch, pushbutton start, run/ idle speed switch, safety circuit

breakers, glow plug low temperature start assist (automatic control), receptacle for attachment of engine data reader.

ELECTRICAL

- Output: 282kVA, 115/200V, 3 PH, 400 Hz, 0.8PF.
- Voltage Regulation: + 0.5% no load – full load.
- Frequency Regulation: + 0.05% no load – full load. (Virtually 0% variation.)
- Transients: No load – 225kVA step load
- Voltage: + 12% deviation from nominal.
- Frequency: + 0.75% deviation from nominal.
- Steady state variation with time at constant load:
- Voltage: + 0.1%.
- Frequency: + 0%

Harmonics:

- Total Harmonics: Less than 2.5%.
- Distortion Factor: Less than 2.5%.

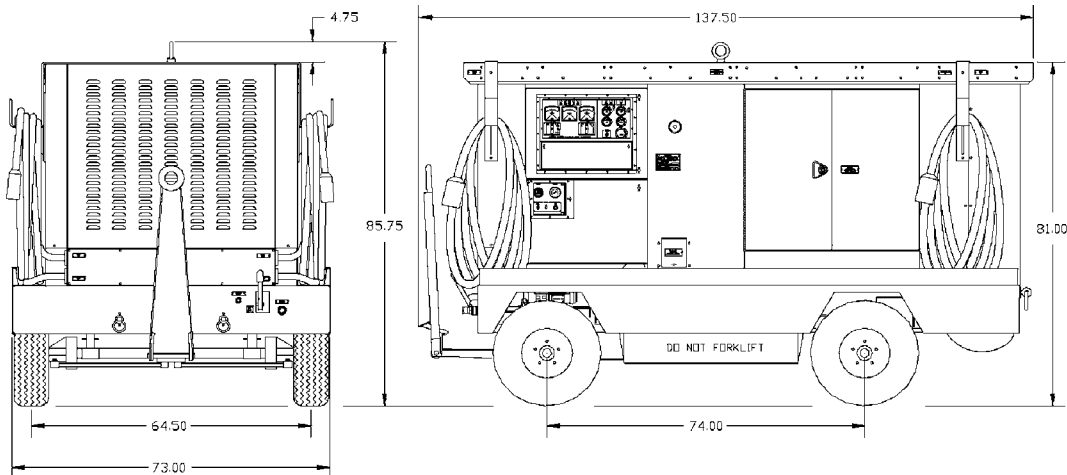
Output Interface:

- Four – 60 ft. output cables with separate on/off controls and overload protection (cable rating 90kVA each).
- Cable interlock protection – automatic individual cable shutdown if cable not connected to aircraft.
- 115 V single-phase 400 Hz output receptacle.

TRAILER

- Heavy duty 4 wheel steerable with leaf spring suspension.
- Tires: 7.50-10NHS
- Rear mechanical drum brakes
- 15 mph tow speed.

Specifications subject to change without notice.



Headquarters & Factory: 11001 US Hwy. 41 North, Palmetto, FL 34221 U.S.A.
Phone: 941.721.1003; 941.721.1006 • Fax: 941.723.3582; 941.531.5876
E-mail: sales@itwmilitarygse.com • www.itwmilitarygse.com

Updated 2/18/08

FROM DESIGN TO DEPLOYMENT